



IRON COLLECTION

BALUSTERS • SHOES • HARDWARE • ACCESSORIES



Oak Pointe offers an extensive selection of imported solid and hollow iron balusters. Our spectacular high quality custom powder coated iron baluster line comes in six stunning finishes.

WHERE TRADITION AND INNOVATION CREATE EXCELLENCE

Custom components are an integral part of our business. Call for pricing on your designs for interior and exterior use.



7 FINISHES AVAILABLE



ABZ

Antique Bronze



AG

Ash Grey



FB

Flat Black



ORB

Oil Rubbed
Bronze



ORC

Oil Rubbed
Copper



PC

Grey Black



SAT

Satin Black

CUSTOM POWDER COATING

Our Powder Coating program is being offered to meet the many requests from our customers. Our Iron Baluster Collection comes in several distinguished finishes, but now you don't have to settle. Similar to our vast offering of wood species, our Custom Powder Coating program allows you to order iron balusters, stainless steel, and aluminum products in most any color that you want.

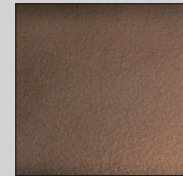
The 6 elegant colors shown are ones we chose to feature but for hundreds of other choices go to www.ralcolor.com.



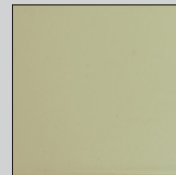
Gun Metal Metallic



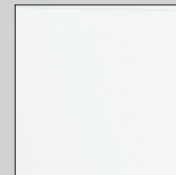
White Aluminum



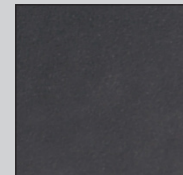
Burnt Penny



Almond



White



Solar Black (Satin)

ADHESIVES & TOOLS



A7P

Fast Setting Epoxy.

9.5 oz. tube (standard caulk gun size) with one nozzle. Will install about 55-75 balusters both ends.



TUP-SAT

Touch-Up Pen for black satin finish.



A-24

Nozzle Extra nozzle for A7P

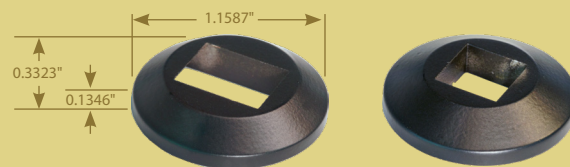
ALUMINUM SHOES FOR SQUARE BALUSTERS

Available in all finishes.



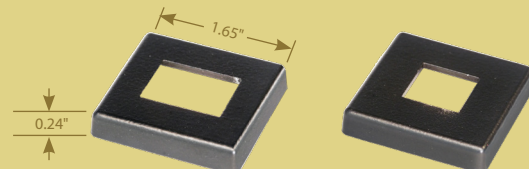
Baluster Size	37° Pitched Shoe w/set screw	Flat Shoe w/set screw
1/2" square	ALUM-LPSH-02	ALUM-LM-06
9/16" square	ALUM-LH-05P	ALUM-LH-06
3/4" square	ALUM-LPSH-08	ALUM-LM-08

Aluminum Low Profile Shoes



Baluster Size	Round Pitched Shoe	Round Flat Shoe
1/2" square	ALUM-LMP-04	ALUM-LMF-04

Available in AG and SAT finishes.



Baluster Size	Square Pitched Shoe	Square Flat Shoe
1/2" square	ALUM-LPP-02	ALUM-LPF-06

Available in FB, ORC and SAT finishes.

WALL RAIL BRACKET



L8611

Wall Rail Bracket.

Available in all iron finishes, setback is 3/4".

44" BALUSTERS

<p>L43544 (Pg 196)</p>	<p>L43844 (Pg 196)</p>	<p>L43944 (Pg 196)</p>	<p>L43244 (Pg 196)</p>	<p>L43644 (Pg 196)</p>	<p>L43744 (Pg 196)</p>
<p>L44044 (Pg 196)</p>	<p>L43444 (Pg 196)</p>	<p>L44144 (Pg 196)</p>	<p>L44244 (Pg 196)</p>	<p>L44344 (Pg 196)</p>	<p>L44444 (Pg 196)</p>
<p>LPLA44-SPLA44 (Pgs various)</p>	<p>L1BASK44-S1BASK44 (Pg 197)</p>	<p>L2BASK44-S2BASK44 (Pg 197)</p>	<p>L1TW44-S1TW44 (Pg 197)</p>	<p>L2TW44-S2TW44 (Pg 197)</p>	<p>L1TW22 (Pg 197)</p>
<p>L1WAVE44 (Pg 197)</p>	<p>L1KNUC44-S1KNUC44 (Pg 197)</p>	<p>L2KNUC44-S2KNUC44 (Pg 197)</p>	<p>L14044-S14044 (Pg 198)</p>	<p>L15044-S15044 (Pg 198)</p>	<p>L16044-S16044 (Pg 198)</p>

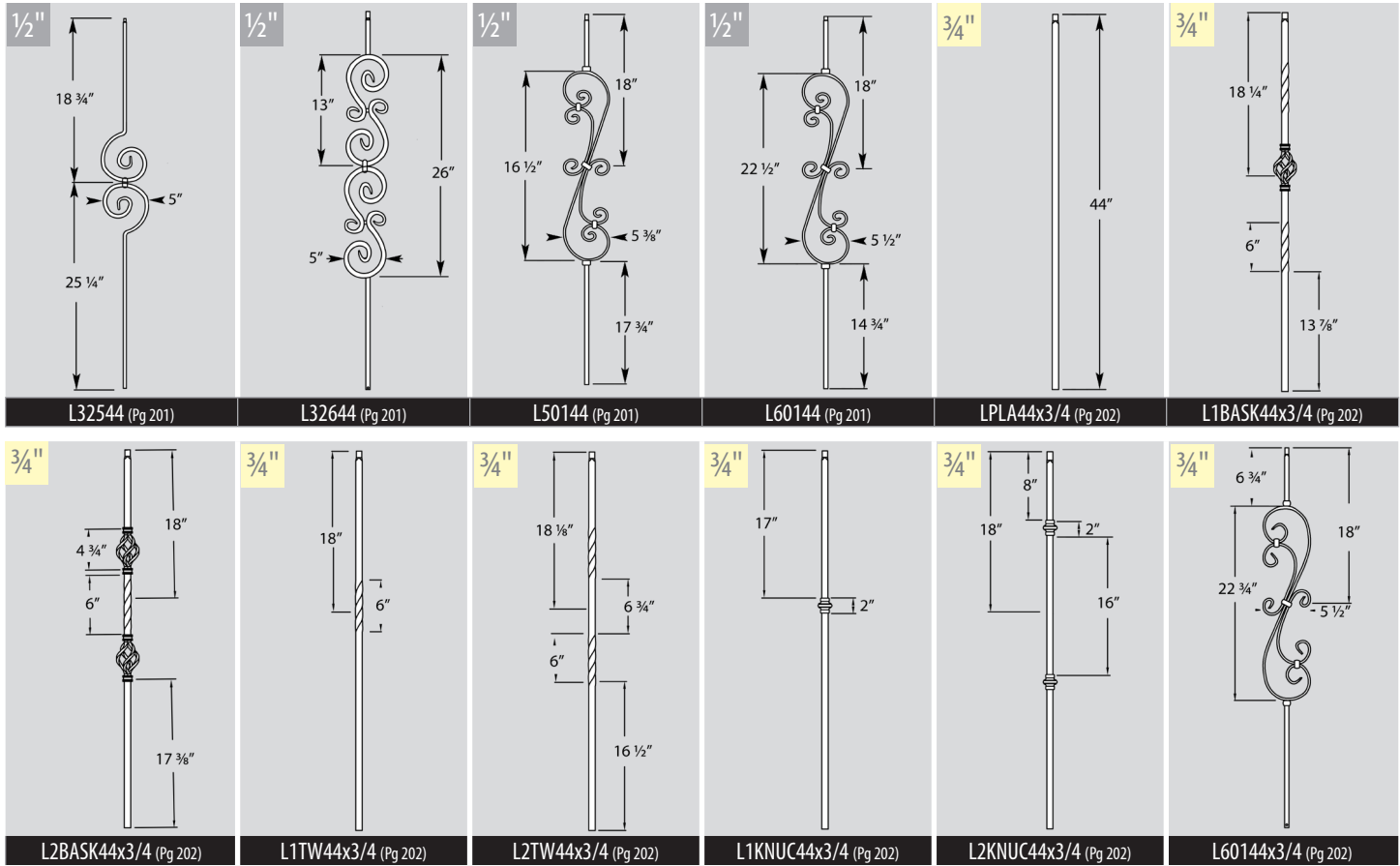


44" BALUSTERS

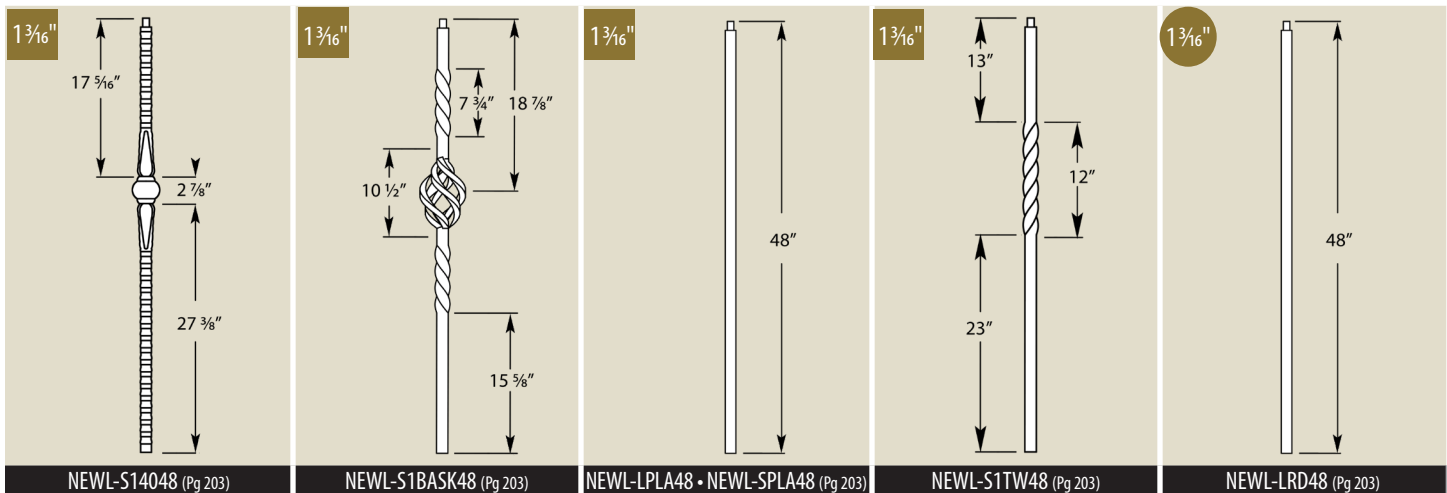
Note: "see page numbers" can be found in our catalog Edition 4.0.

<p>9/16" 44"</p> <p>L14344 - S14344 (Pg 198)</p>	<p>9/16" 44"</p> <p>LPLA44-9/16HM SPLA44-9/16HM (Pg 198)</p>	<p>9/16" 18" 2 1/4" 17"</p> <p>L30544 - S30544 (Pg 198)</p>	<p>9/16" 18" 2 1/4" 18" 17"</p> <p>L30844 - S30844 (Pg 198)</p>	<p>9/16" 18" 4 7/16"</p> <p>S13144 (Pg 198)</p>	<p>9/16" 18" 4 7/16" 17"</p> <p>S13244 (Pg 198)</p>
<p>5/8" 44"</p> <p>L65144 (Pg 199)</p>	<p>5/8" 18" 22" 15"</p> <p>L65244 (Pg 199)</p>	<p>5/8" 18" 22" 15"</p> <p>L65344 (Pg 199)</p>	<p>5/8" 18" 22" 15"</p> <p>L65044 (Pg 199)</p>	<p>1/2" x 1 1/2" 44"</p> <p>LPLA44-REC (Pg 199)</p>	<p>1/2" 44"</p> <p>SR60044 (Pg 200)</p>
<p>1/2" 18" 4"</p> <p>SR60144 (Pg 200)</p>	<p>1/2" 11 1/2" 18" 24 1/2" 4"</p> <p>SR60244 (Pg 200)</p>	<p>1/2" 18" 26"</p> <p>SR61144 (Pg 200)</p>	<p>1/2" 9" 18" 26"</p> <p>SR61244 (Pg 200)</p>	<p>9/16" 44"</p> <p>SR54344 (Pg 200)</p>	<p>1/2" 16" 18" 4" 24"</p> <p>L40144 (Pg 200)</p>
<p>1/2" 18" 7" 14" 4" 15"</p> <p>L40244 (Pg 200)</p>	<p>1/2" 13" 10"</p> <p>L1R1B44 - S1R1B44 (Pg 201)</p>	<p>1/2" 18" 6" 17"</p> <p>L2R1B44 - S2R1B44 (Pg 201)</p>	<p>1/2" 17 3/4" 6" 5 1/2" 14"</p> <p>L8044 - S8044 (Pg 201)</p>	<p>1/2" 6" 7 1/2" 5 1/2" 16 3/4"</p> <p>L8544 - S8544 (Pg 201)</p>	<p>1/2" 18" 24 1/2" 7" 14"</p> <p>L30144 (Pg 201)</p>

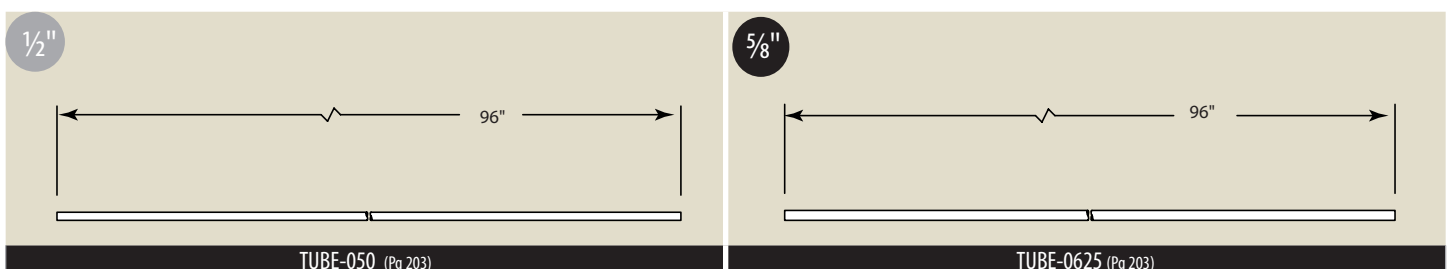
44" BALUSTERS



48" NEWELS

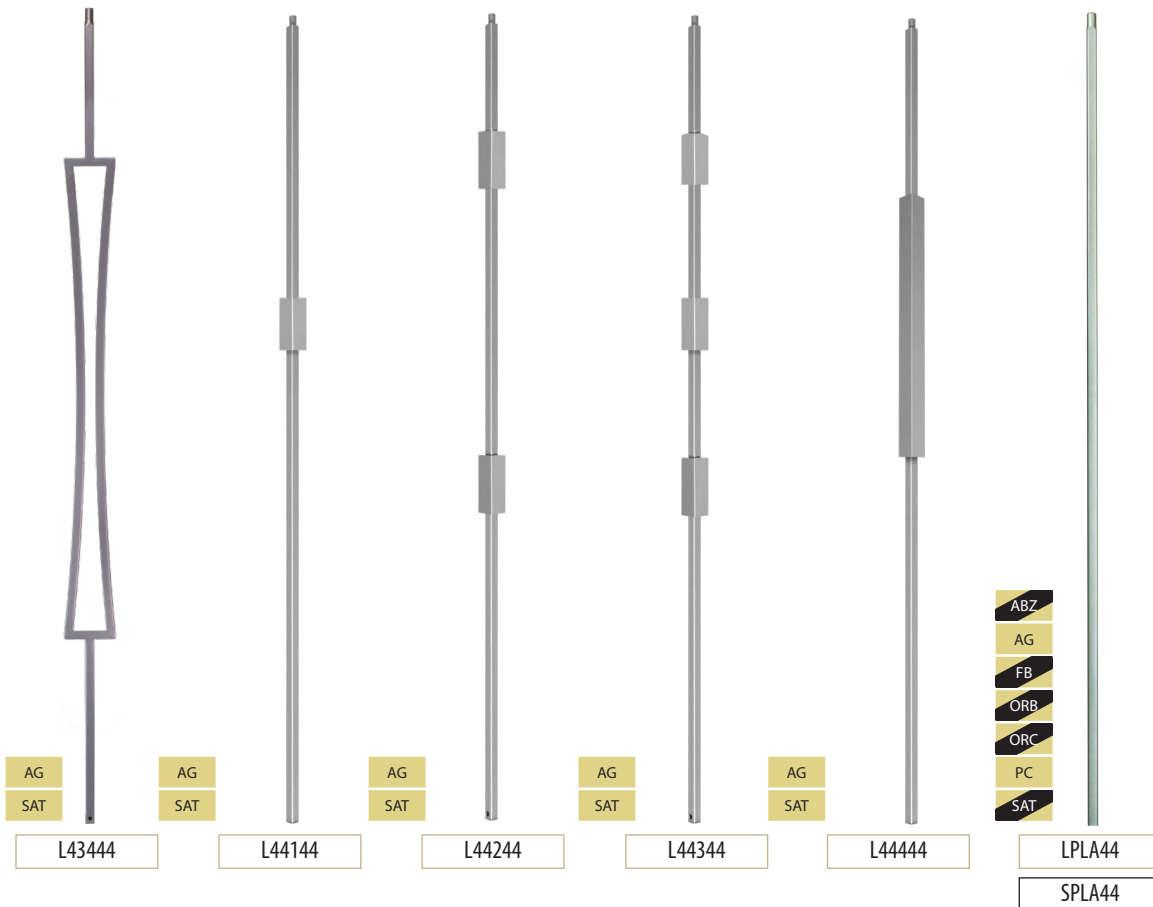
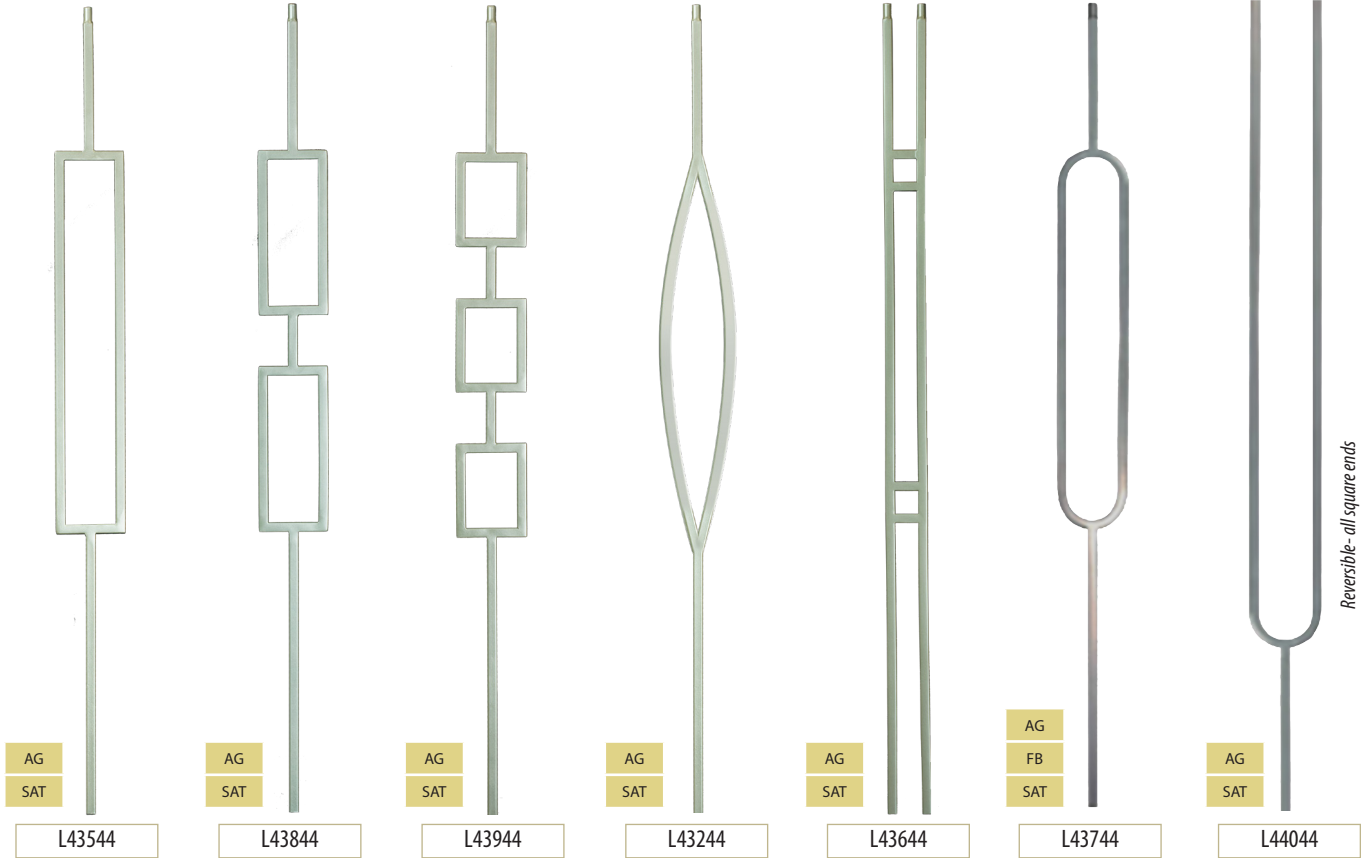


48" & 96" TUBES





1/2" Square Hollow Bar (44" H)



Aluminum Shoes
for Balto Series



ALUM-LPSH-02

37° pitched shoe with set screw for 1/2" balusters



ALUM-LM-06

Flat shoe with set screw for 1/2" balusters

Low Profile Shoes
also available

Follow this key to match the finish with the iron available.

- = Only available in Hollow
- = Only available in Solid
- = Available in Hollow & Solid



Basket close-up

*36" kneewall balusters available in hollow only ORB & SAT (non-stock).
Order:
KW-L1TW36
KW-L2TW36
KW-L1BASK36
KW-L2BASK36
Also L50144 pg 201

1/2" Square Hollow & Solid Bar (44" H and 36" H*)

	L1BASK44*		L2BASK44*		L1TW44*		L2TW44*		L1TW22		LPLA44
	S1BASK44		S2BASK44		S1TW44		S2TW44				SPLA44

Aluminum Shoes

for Twist & Basket and Knuckle & Wave Series



ALUM-LPSH-02

37° pitched shoe with set screw for 1/2" balusters



ALUM-LM-06

Flat shoe with set screw for 1/2" balusters

Wall Rail Bracket

Available in all finishes, setback is 3/4"



L8611

Follow this key to match the finish with the iron available.

- = Only available in Hollow
- = Only available in Solid
- = Available in Hollow & Solid

1/2" Square Hollow & Solid Bar (44" H)

	L1WAVE44		L1KNUC44		L2KNUC44		LPLA44
			S1KNUC44		S2KNUC44		SPLA44

Adjustable Knuckle



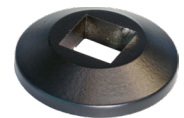
ALUM-LAK01

Available in all Pacific finishes except Ash Gray

Low Profile Shoes
pitched and flat available

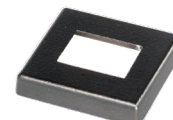


ALUM-LMP-04

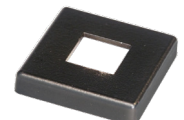


ALUM-LMF-04

Available in AG and SAT finishes.



ALUM-LPP-02



ALUM-LPF-06









Available in FB, ORC and SAT finishes.



9/16" Square Hollow & Solid Bar (44" H)



Gothic Bar close-up

	 <div style="border: 1px solid black; padding: 2px; width: fit-content; margin: 0 auto;">L14044</div> <div style="border: 1px solid black; padding: 2px; width: fit-content; margin: 0 auto;">S14044</div>		 <div style="border: 1px solid black; padding: 2px; width: fit-content; margin: 0 auto;">L15044</div> <div style="border: 1px solid black; padding: 2px; width: fit-content; margin: 0 auto;">S15044</div>		 <div style="border: 1px solid black; padding: 2px; width: fit-content; margin: 0 auto;">L16044</div> <div style="border: 1px solid black; padding: 2px; width: fit-content; margin: 0 auto;">S16044</div>		 <div style="border: 1px solid black; padding: 2px; width: fit-content; margin: 0 auto;">L14344</div> <div style="border: 1px solid black; padding: 2px; width: fit-content; margin: 0 auto;">S14344</div>
--	---	--	---	--	---	--	---

Aluminum Shoes
for Gothic and Mediterranean Series



ALUM-LH-05P

37° pitched shoe with set screw for 9/16" balusters



ALUM-LH-06

Flat shoe with set screw for 9/16" balusters

9/16" Square Hollow & Solid Bar (44" H)



Mediterranean Bar close-up

	 <div style="border: 1px solid black; padding: 2px; width: fit-content; margin: 0 auto;">LPLA44-9/16HM</div> <div style="border: 1px solid black; padding: 2px; width: fit-content; margin: 0 auto;">SPLA44-9/16HM</div>		 <div style="border: 1px solid black; padding: 2px; width: fit-content; margin: 0 auto;">L30544</div> <div style="border: 1px solid black; padding: 2px; width: fit-content; margin: 0 auto;">S30544</div>		 <div style="border: 1px solid black; padding: 2px; width: fit-content; margin: 0 auto;">L30844</div> <div style="border: 1px solid black; padding: 2px; width: fit-content; margin: 0 auto;">S30844</div>		 <div style="border: 1px solid black; padding: 2px; width: fit-content; margin: 0 auto;">S13144</div>		 <div style="border: 1px solid black; padding: 2px; width: fit-content; margin: 0 auto;">S13244</div>
---	--	---	--	---	--	---	---	---	---

Wall Rail Bracket

Available in all finishes, setback is 3 1/4"



L8611

Follow this key to match the finish with the iron available.

-  = Only available in Hollow
-  = Only available in Solid
-  = Available in Hollow & Solid



5/8" Round Hollow Bar (44" H)

Aluminum Shoe
for Venetian Series
for 5/8" balusters.



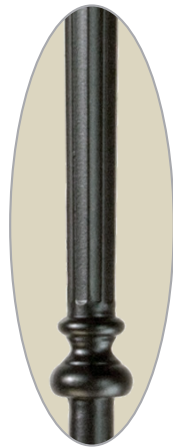
ALUM-LR-10

Follow this key to match the finish with the iron available.

- = Only available in Hollow
- = Only available in Solid
- = Available in Hollow&Solid

- ABZ
- FB
- ORB
- ORC
- SAT

L65144



L65244
Fluted Detail

- ABZ
- FB
- ORB
- ORC
- SAT

L65244



L65344
Center Detail

- ABZ
- FB
- ORB
- ORC
- SAT

L65344



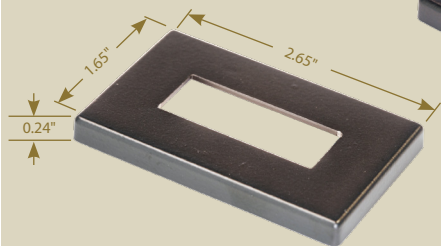
L65044
Center Detail

- ABZ
- FB
- ORB
- ORC
- SAT

L65044

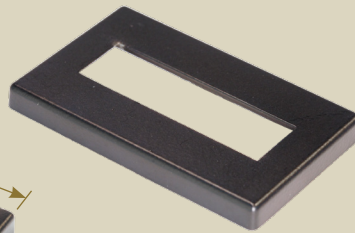
1/2" x 1 1/2" Rectangular Hollow (44" H)

Aluminum Shoe
for Rectangle Series



ALUM-LPF-15

Flat low profile shoe for rectangular balusters



ALUM-LPP-15

Pitched low profile shoe for rectangular balusters

Available in SAT and ORC finish.

- ORC
- SAT

LPLA44-REC

Rectangle Plain Hollow Bar
1/2" thick x 1-1/2" wide.
Install the 1/2" side parallel
to the stringer



1/2" Round Solid Bar (44" H)

SR60044 Bar Detail

SR60144 Center Detail

SR61144 Center Detail

SR60044

SR60144

SR60244

SR61144

SR61244

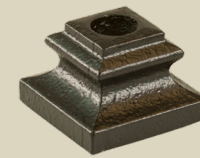
9/16" Round Solid Bar (44" H)

Iron Shoes
for the Italian Round Series



R-09P

37° pitched shoe for 1/2" round balusters



R-08F

Flat shoe for 1/2" round balusters

NOTE:
No shoes required on round balusters

FB

SR54344

1/2" Square Hollow & Solid Bar (44" H)

Follow this key to match the finish with the iron available.

- = Only available in Hollow
- = Only available in Solid
- = Available in Hollow & Solid

Circle = 4" diameter

Circle = 4" diameter

Circle = 4" diameter

AG

FB

SAT

L40144

AG

FB

SAT

L40244

ABZ

AG

FB

ORB

ORC

PC

SAT

LPLA44

SPLA44

Aluminum Shoes
for the Circle Series



ALUM-LPSH-02

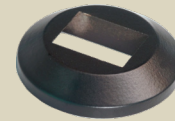
37° pitched shoe with set screw for 1/2" balusters



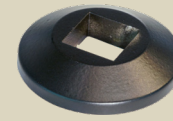
ALUM-LM-06

Flat shoe with set screw for 1/2" balusters

Low Profile Shoes
pitched and flat available

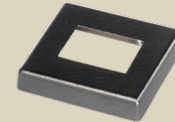


ALUM-LMP-04

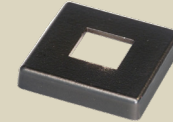


ALUM-LMF-04

Available in AG and SAT finishes.



ALUM-LPP-02



ALUM-LPF-06

Available in FB, ORC and SAT finishes.



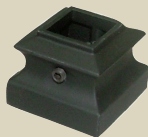
Aluminum Shoes

for Ribbon and
Scroll Series



ALUM-LPSH-02

37° pitched shoe with set
screw for 1/2" balusters



ALUM-LM-06

Flat shoe with set screw
for 1/2" balusters

Wall Rail Bracket

Available in all
finishes,
setback is 3/4"



L8611

1/2" Square Hollow & Solid Bar (44" H)



Ribbon Detail



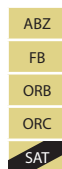
L1RIB44

S1RIB44



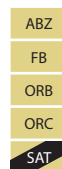
L2RIB44

S2RIB44



L8044

S8044



L8544

S8544



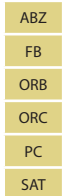
LPLA44

SPLA44

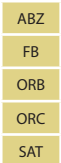
Follow this key to match the finish
with the iron available.



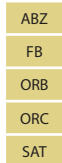
1/2" Square Hollow Bar (44" H)



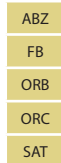
L30144



L50144*



L60144



L32544



L32644



LPLA44

SPLA44

*36" kneewall baluster KW-L50136 in ORB & SAT



3/4" Square Hollow Bar (44" H)



- ABZ
- FB
- ORB
- ORC
- SAT

LPLA44x3/4



- ABZ
- FB
- ORB
- ORC
- SAT

L1BASK44x3/4



- ABZ
- FB
- ORB
- ORC
- SAT

L2BASK44x3/4



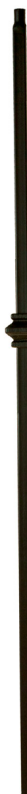
- ABZ
- FB
- ORB
- ORC
- SAT

L1TW44x3/4



- ABZ
- FB
- ORB
- ORC
- SAT

L2TW44x3/4



- ABZ
- FB
- ORB
- ORC
- SAT

L1KNUC44x3/4



- ABZ
- FB
- ORB
- ORC
- SAT

L2KNUC44x3/4



- ABZ
- FB
- ORB
- ORC
- SAT

L60144x3/4

Aluminum Shoes
for the Mega Series

ALUM-LPSH-08

37° pitched shoe with set screw for 3/4" balusters



ALUM-LM-08

Flat shoe with set screw for 3/4" balusters



Follow this key to match the finish with the iron available.

- = Only available in Hollow
- = Only available in Solid
- = Available in Hollow & Solid

1 3/16" Hollow (48" H)

1 3/16" Hollow and Solid Bar (48" H)



SAT

Stainless Steel (304)

AG
SAT

SAT

SAT

NEWL-LRD48

NEWL-LRD48

NEWL-S1BASK48

NEWL-LPLA48

NEWL-SPLA48

NEWL-S1TW48

NEWL-S14048

See page 211 in our catalog Edition 4.0.

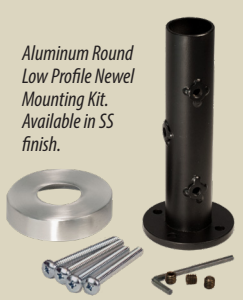
Newel Kits

Aluminum Round Low Profile Newel Mounting Kit. Available in SAT finish.



RC-101-KIT-SAT

Aluminum Round Low Profile Newel Mounting Kit. Available in SS finish.



RC-101-KIT-304

Aluminum Square Newel Mounting Kit. Available in AG and SAT finish.



NC-101-KIT

Aluminum Square Low Profile Newel Mounting Kit. Available in AG and SAT finish.



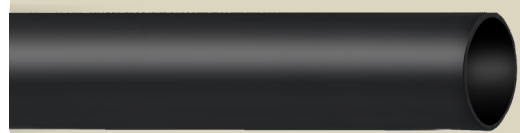
NCLP-101-KIT

See page 211 in our catalog Edition 4.0.

Follow this key to match the finish with the iron available.

- = Only available in Hollow
- = Only available in Solid
- = Available in Hollow & Solid

Horizontal Tubes



1/2"

TUBE-050-48

1/2"D x 48"L

5/8"

TUBE-0625-48

5/8"D x 48"L

AG
SAT

TUBE-050-96

1/2"D x 96"L

TUBE-0625-96

5/8"D x 96"L

Also available in Stainless Steel:
1/2" Solid and Hollow
5/8" Hollow
See our Modern Metal Collection for more.



OAK POINTE

WHERE TRADITION AND INNOVATION CREATE EXCELLENCE

96 NEW PACE ROAD
NEWCOMERSTOWN
OHIO 43832

P 740.498.9820

F 740.498.9821

GENERAL INQUIRY

INFO@STAIRPARTSANDMORE.COM

QUOTE REQUESTS

QUOTES@STAIRPARTSANDMORE.COM

SUBMIT ORDERS

ORDERS@STAIRPARTSANDMORE.COM

Connect with us on:

