



OAK POINTE

#3007-316

NewelFast[®]

Interior or Exterior Use

(316 Stainless Steel)

●
Quick, Easy, and Completely
Concealed Installation

●
Works on Round and
Square Newels

●
No Trim or Plugs Required

●
No Special Tools

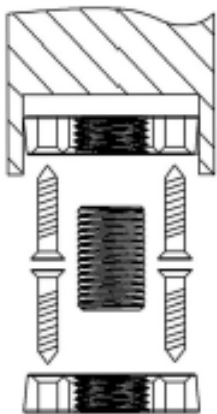
96 New Pace Rd
Newcomerstown, OH 43832
info@stairpartsandmore.com
www.stairpartsandmore.com

740.498.9820

Installation Instructions

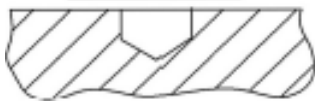
STEP 1

Locate center on base of the newel. Using a 2" hole saw, drill/saw a 2" x 13/16" hole in the base of the post. Set the router to 13/16" depth, and remove the remaining material inside the hole saw cut. Insert one of the NewelFast® discs and mark screw locations. Pilot drill and secure with 6, 3 1/2" x #10 Stainless Steel (304 interior, 316 exterior) deck screws (not provided).



STEP 2

Establish a location for mounting the newel. Mark the center and drill a 3/4" diameter x 1/4" deep locator hole. Mark the screw locations using the threaded stud to center one of the disks in the 3/4" pilot hole. Drill and secure with 6, 3 1/2" x #10 Stainless Steel (304 interior, 316 exterior) deck screws (not provided). Be sure the screws go into floor joists or added blocking that will accept the full length of the screws and provide suitable support for the application.



STEP 3

Thread the newel post onto the stud mounted on the floor or starting step. Rotate clockwise until tight and properly aligned. Use of a strap wrench or similar tool may be necessary.

